



scan or click
to shop



**CLICK HERE OR
SCAN THE CODE
FOR VIDEO TUTORIAL**

Sweet Bugs - Birthday

Short Cut Card Sketch #25

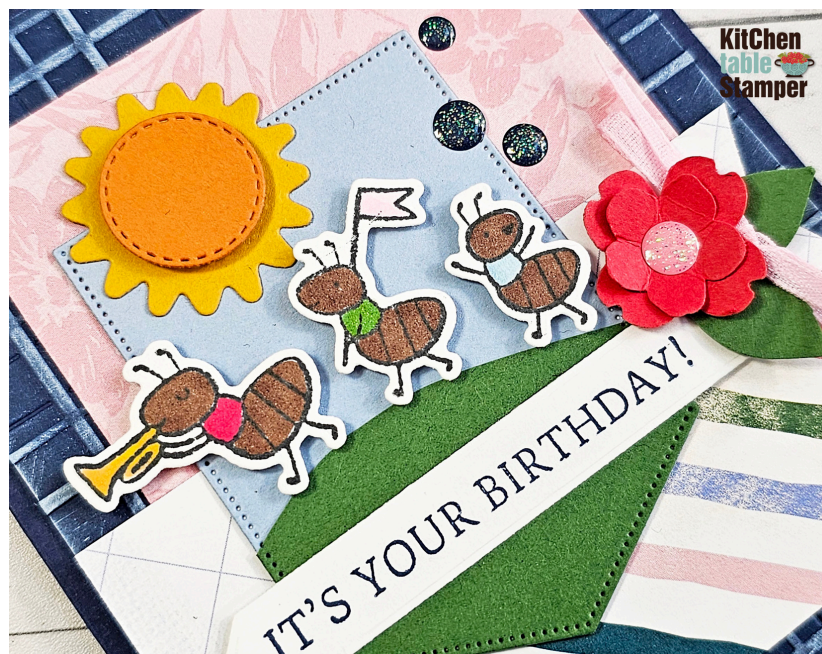


Supplies

- Sweet Bugs Bundle - 167002
- Sweet Bugs Stamp Set - 166995
- Sweet Bugs Dies - 167001
- Words Of Beauty Bundle - 167090
- Birthday Celebration Dies - 164598
- Bright Skies Dies - 162793
- Petal Park Builder Punch - 160576
- Forever Plaid 3D Embossing Folder - 164049
- Tailored Tag Punch - 145667
- Square Snippets 12" X 12" Designer Series Paper - 166993
- Night Of Navy Cardstock - 100867
- Basic White Cardstock - 166780
- Seaside Spray Cardstock - 150883
- Garden Green Cardstock - 102584
- Sweet Sorbet Cardstock - 159268
- Crushed Curry Cardstock - 131199
- Pumpkin Pie Cardstock - 105117
- Tuxedo Black Memento Ink Pad - 132708
- Night Of Navy Stampin' Pad - 147110
- Uninked Stampin' Pad & Whisper White Refill - 147277
- Balmy Blue Stampin' Blends - 154830
- Bubble Bath Stampin' Blends - 161675
- Daffodil Delight Stampin' Blends - 154883
- Granny Apple Green Stampin' Blends - 154885
- Shaded Spruce Stampin' Blends - 154903
- Stampin' Blends Deep - 158152
- Strawberry Slush Stampin' Blends - 165290
- Stampin' Blends Color Lifter - 144608
- Bubble Bath 1/8" Faux Linen Ribbon - 167075
- Sparkle Dot Essentials - 166991
- Simply Scored Scoring Tool - 122334
- Paper Trimmer - 152392
- Stampin' Cut & Emboss Machine - 149653
- Specialty Plate - 154711
- Paper Snips Scissors - 103579
- Bone Folder - 102300
- Take Your Pick - 144107
- Multipurpose Liquid Glue - 110755
- Stampin' Dimensionals - 104430
- Mini Stampin' Dimensionals - 144108
- Mini Glue Dots - 103683
- Stampin' Pierce Mat - 126199

Measurements

- **Night of Navy Cardstock**
 - 5-1/2 x 8-1/2", scored at 4-1/4"
 - 4 x 5-1/4"
- **Basic White Cardstock**
 - scrap for stamping and die cutting the marching ants using the Sweet Bugs Bundle
 - scrap for stamping and die cutting the irregular hexagon using the Words Of Beauty Bundle
- **Garden Green Cardstock**
 - scrap for die cutting the pocket using the Birthday Celebrations Dies
 - scrap for punching TWO leaves using the Petal Park Builder Punch
- **Seaside Spray Cardstock**
 - scrap for die cutting the pocket using the Birthday Celebrations Dies
- **Crushed Curry Cardstock**
 - scrap for die cutting the sun using the Bright Skies Dies
- **Pumpkin Pie Cardstock**
 - scrap for die cutting the stitched circle using the Bright Skies Dies
- **Sweet Sorbet Cardstock**
 - scrap for punching one small and one medium flower using the Petal Park Builder Punch
- **Square Snippets Designer Series Paper**
 - 3-1/4 x 4-1/4"
 - 4 x 1"
- **Bubble Bath Faux Linen Ribbon**
 - about 9"



Instructions

1. Score, fold and burnish the Night of Navy card base using your Bone Folder .
2. Emboss the 4 x 5-1/4" Night of Navy panel using the Forever Plaid Embossing Folder. Gently ink the embossed image using white ink. Allow time to dry before adhering it to the card front using Multipurpose Liquid Glue.
3. Cut chicken lips on the right side of the 4 x 1" piece of designer paper.
4. Adhere the designer papers to the card using liquid glue.
5. Cut the grassy hill freehand from the Garden Green pocket using Paper Snips. Adhere the hill to the Seaside Spray pocket using liquid glue then to the card using the same adhesive.
6. Adhere the Pumpkin Pie stitched circle to the Crushed Curry sun using Stampin' Dimensionals. Adhere the sun to the card using liquid glue.
7. Stamp the greeting left of center on the white label using Night of Navy ink. Adhere the greeting to the card using liquid glue.
8. Stamp the ants on a scrap of white cardstock using Tuxedo Black Memento ink. Color using Stampin' Blends. Die cut.
9. Adhere the ants to the card using Stampin' Dimensionals.
10. Shape the flowers using the capped putty end of the Take Your Pick Tool and a Stampin' Pierce Mat. Adhere the smaller flower to the larger flower using a glue dot. Adhere the flower to the card using the same adhesive.
11. Adhere the leaves to the card using Mini Stampin' Dimensionals.
12. Make a bow using the Bubble Bath ribbon. Adhere it to the card using a Mini Glue Dot.
13. Embellish using the Sparkle Dot Essentials.

