



scan or click
to shop



**CLICK HERE OR
SCAN THE CODE
FOR VIDEO TUTORIAL**

Christmas Cake Treat Box

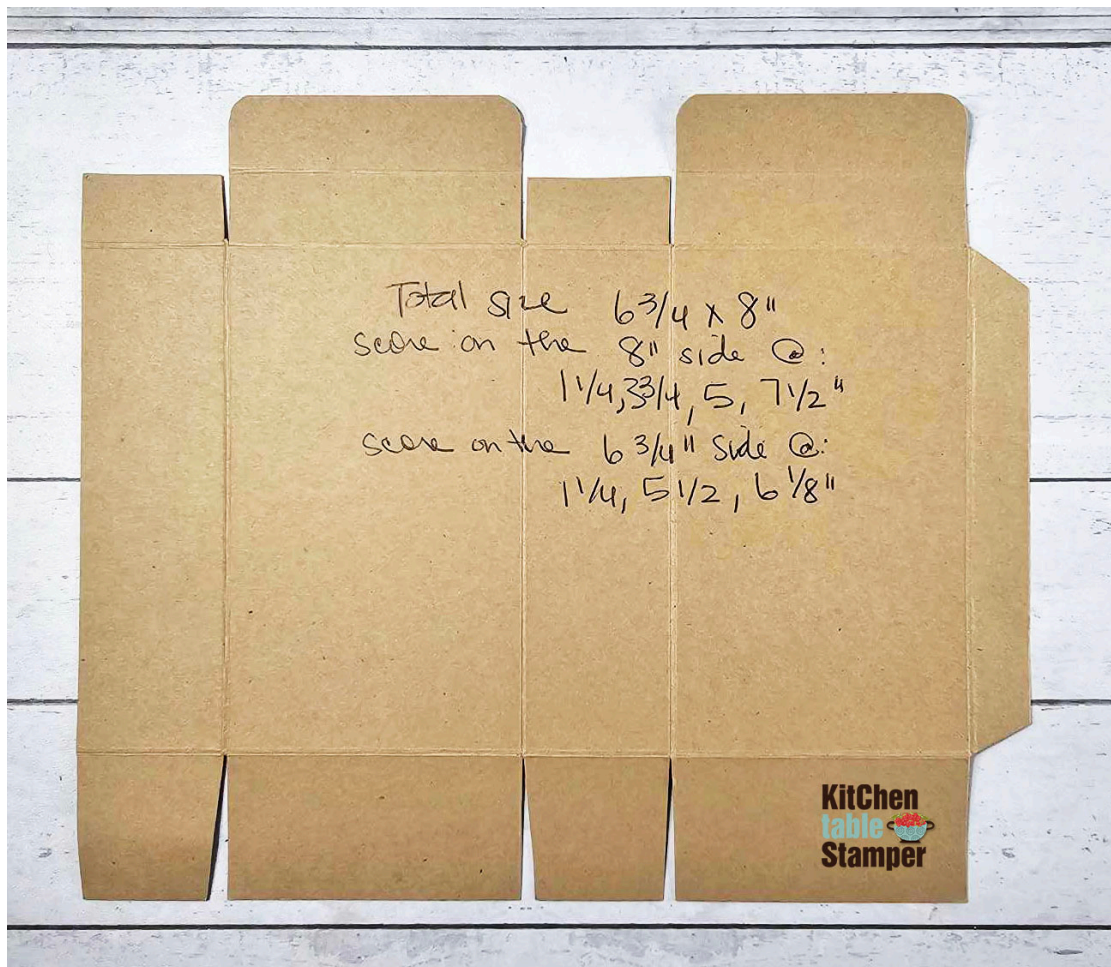


Supplies

- Snowy Wonder Bundle - 164125
- Snowy Wonder Bundle - 164125
- Snowy Wonder Stamp Set - 164334
- Snowy Wonder Dies - 164124
- Perennial Postage Dies - 162607
- Spotlight On Nature Dies - 163580
- Iconic Imagery Dies - 164200
- Snowy Scenes 12" X 12" (30.5 X 30.5 Cm) Designer Series Paper - 164333
- Pool Party Cardstock - 122924
- Basic White Cardstock - 159276
- Poppy Parade Cardstock - 119793
- Garden Green Cardstock - 102584
- Tuxedo Black Memento Ink Pad - 132708
- Pebbled Path Classic Stampin' Pad - 161648
- Poppy Parade Stampin' Pad - 147050
- Garden Green Stampin' Pad - 147089
- Pool Party Stampin' Pad - 147107
- Pool Party 5/8" Pompom Ribbon - 164129
- Real Red & White Adhesive-Backed Peppermints - 164050
- Paper Trimmer - 152392
- Simply Scored Scoring Tool - 122334
- Stampin' Cut & Emboss Machine - 149653
- Multipurpose Liquid Glue - 110755
- Stampin' Dimensionals - 104430
- Mini Stampin' Dimensionals - 144108
- Mini Glue Dots - 103683
- Tear & Tape Adhesive - 154031
- Take Your Pick - 144107
- Bone Folder - 102300
- Paper Snips Scissors - 103579
- Stampin' Pierce Mat - 126199
- Simply Shammy - 147042
- Grid Paper - 130148

Measurements

- **Pool Party Cardstock**
 - 6-3/4 x 8"
 - scored on the 8" side at: 1-1/4, 3-3/4, 5 and 7-1/2"
 - scored on the 6-3/4" side at: 1-1/4, 5-1/2 and 6-1/8"
 - scrap for die cutting a 2-1/8" radiating circle using the Spotlight on Nature Dies
- **Basic White Cardstock**
 - scrap for stamping and die cutting the snowman, hat, candy cane, THREE snowflakes of various sizes and a tree using the Snowy Wonder Bundle
 - scrap for die cutting the label using the Perennial Postage Dies
- **Poppy Parade Cardstock**
 - scrap for die cutting the large label using the Iconic Imagery Dies
- **Garden Green Cardstock**
 - scrap die cutting a tree using the Snowy Wonder Dies
- **Snowy Scenes Designer Series Paper**
 - TWO 2-1/4 x 4"
- **Pool Party 5/8" Pompom Ribbon**
 - about 20"



Instructions

1. Score, burnish with a Bone Folder, and trim the treat box according to the template photo and measurements above. Assemble the box using Tear & Tape Adhesive.
2. Pop the Christmas Tree Cake into the box, punch a 1/4" hole in the top tabs and close with ribbon.
3. Adhere the designer paper to the front and back of the box using Multipurpose Liquid Glue. Then adhere the Poppy Parade label and the Pool Party radiating circle to the front of the box using the same adhesive.
4. On Basic White scraps, stamp the
 - a. snowman and candy cane using Tuxedo Black Memento ink
 - b. hat using Pebbled Path ink
 - c. snowflakes using Pool Party ink
 - d. tree using Garden Green ink
5. Color the snowman and candy cane with Stampin' Blends then die cut the stamped images and the Garden Green tree.
6. Stamp the sentiment on the postage label using Poppy Parade ink.
7. Adhere the snowman, green tree, hat, candy cane and smaller snowflake using liquid glue. Adhere the sentiment label followed by the stamped tree, and medium snowflake using Mini Stampin' Dimensionals.
8. Adhere the largest snowflake to a mini clothes pin and allow it to dry completely. Clip the mini clothes pin snowflake on the top of the box over the ribbon.
9. Embellish using the Real Red & White Adhesive-Backed Peppermints.

Sources

- [Mini Clothes Pins](#) - Amazon
- [1/4" Circle Punch](#) - Amazon
- [Corner Chomper](#) - Amazon
- [Squeeze Bottles](#) - Amazon
- [Floss Threaders](#) - Amazon
- [Little Debbie Christmas Tree Cakes](#) - Amazon
- [Little Debbie Christmas Tree Cake Pajamas](#) - Amazon

