

Painted Harvest Cookie Tote

Marisa Alvarez

847 922-6795 call/text

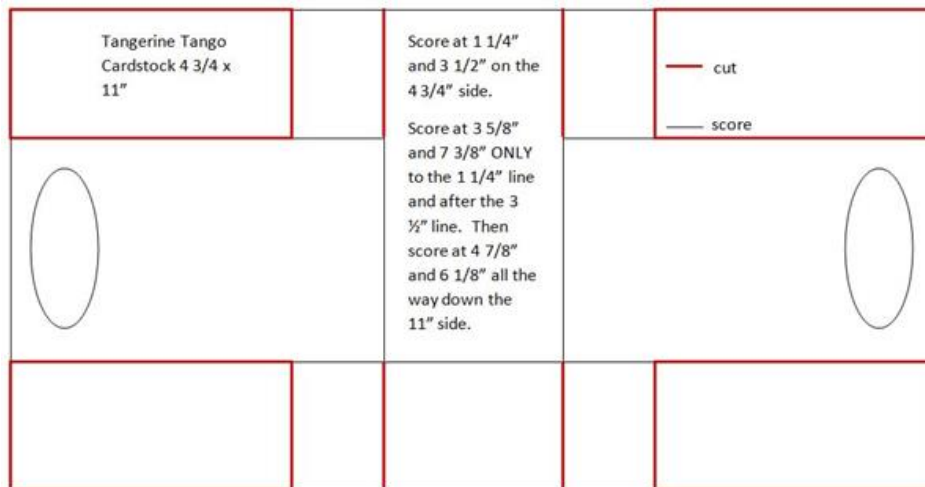
marisa@kitchentablestamper.com

marisaalvarez.stampinup.net



Measurements:

Tangerine Tango Cardstock - 4 3/4 x 11", scored and cut according to the diagram:



Very Vanilla - 2 1/2" square die cut with the second largest Stitched Shapes circle

Early Espresso - 2 3/4" square die cut with the coordinating Layering Circles scallop circle

Garden Green - 2" square stamped and punched with Leaf Punch

Your choice of two Painted Harvest Designer Series Paper Patterns - 2 x 3 3/8" and 2 x 1 1/2"

Painted Harvest Cookie Tote

Marisa Alvarez

847 922-6795 call/text

marisa@kitchentablestamper.com

marisaalvarez.stampinup.net

Crushed Curry Mini Chevron Ribbon - 10-12"

- [Painted Harvest Photopolymer Bundle - 146021](#)
- [Layering Circle Framelits Dies - 141705](#)
- [Layering Ovals Framelits Dies - 141706](#)
- [Painted Autumn Designer Series Paper - 144613](#)
- [Tangerine Tango 8-1/2" X 11" Cardstock - 111349](#)
- [Very Vanilla 8-1/2" X 11" Cardstock - 101650](#)
- [Early Espresso 8-1/2" X 11" Cardstock - 119686](#)
- [Garden Green 8-1/2" X 11" Cardstock - 102584](#)
- [Daffodil Delight Classic Stampin' Pad - 126944](#)
- [Crushed Curry Classic Stampin' Pad - 131173](#)
- [Soft Suede Classic Stampin' Pad - 126978](#)
- [Early Espresso Classic Stampin' Pad - 126974](#)
- [Garden Green Classic Stampin' Pad - 126973](#)
- [Crushed Curry 3/8" Mini Chevron Ribbon - 144197](#)
- [Tear & Tape Adhesive - 138995](#)
- [Snail Adhesive - 104332](#)
- [Multipurpose Liquid Glue - 110755](#)
- [Big Shot - 143263](#)
- [Simply Scored - 122334](#)
- [Bone Folder - 102300](#)
- [Paper Snips - 103579](#)