

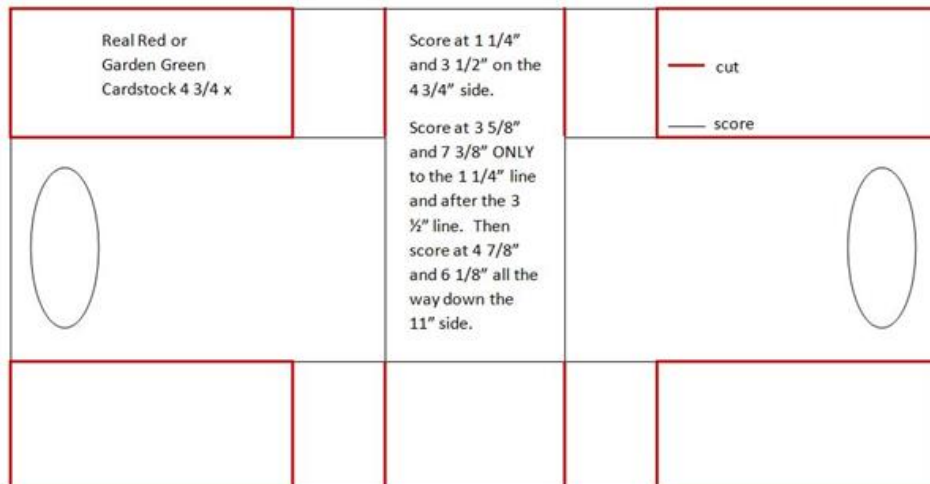
Painted Harvest Christmas Wreath Cookie Tote

Marisa Alvarez
 847 922-6795 call/text
marisa@kitchentablestamper.com
marisaalvarez.stampinup.net



Measurements:

Real Red - 4 3/4 x 11", scored and cut according to the diagram:



Real Red - 1 3/4 x 1 1/4" for die cutting bow from Mini Treat Bag Thinlits

Whisper White - 2 1/2" stitched circle die cut with the second largest Stitched Shapes circle

Painted Harvest Christmas Wreath Cookie Tote

Marisa Alvarez
847 922-6795 call/text
marisa@kitchentablestamper.com
marisaalvarez.stampinup.net

Garden Green - 2 3/4" square die cut with the coordinating Layering Circles scallop circle

Your choice of two Quilted Christmas Designer Series Paper Patterns - 2 x 3 3/8" and 2 x 1 1/2"

Quilted Christmas 1/4" Ribbon - 12"

- [Painted Harvest Photopolymer Stamp Set - 144783](#)
- [Layering Ovals Framelits Dies - 141706](#)
- [Layering Circle Framelits Dies - 141705](#)
- [Stitched Shapes Framelits Dies - 145372](#)
- [Mini Treat Bag Thinlits Dies - 137547](#)
- [Quilted Christmas 6" X 6" \(15.2 X 15.2 Cm\) Designer Series Paper - 144617](#)
- [Real Red 8-1/2" X 11" Cardstock - 102482](#)
- [Garden Green 8-1/2" X 11" Cardstock - 102584](#)
- [Whisper White 8-1/2" X 11" Cardstock - 100730](#)
- [Garden Green Classic Stampin' Pad - 126973](#)
- [Wild Wasabi Classic Stampin' Pad - 126959](#)
- [Real Red Classic Stampin' Pad - 126949](#)
- [Quilted Christmas 1/4" \(6.4 Mm\) Ribbon - 144620](#)
- [Multipurpose Liquid Glue - 110755](#)
- [Snail Adhesive - 104332](#)
- [Stampin' Dimensionals - 104430](#)
- [Big Shot - 143263](#)
- [Simply Scored - 122334](#)
- [Bone Folder - 102300](#)
- [Stampin' Pierce Mat - 126199](#)