

# Succulent Window Box

Marisa Alvarez

847 922-6795 call/text

[marisa@kitchentablestamper.com](mailto:marisa@kitchentablestamper.com)

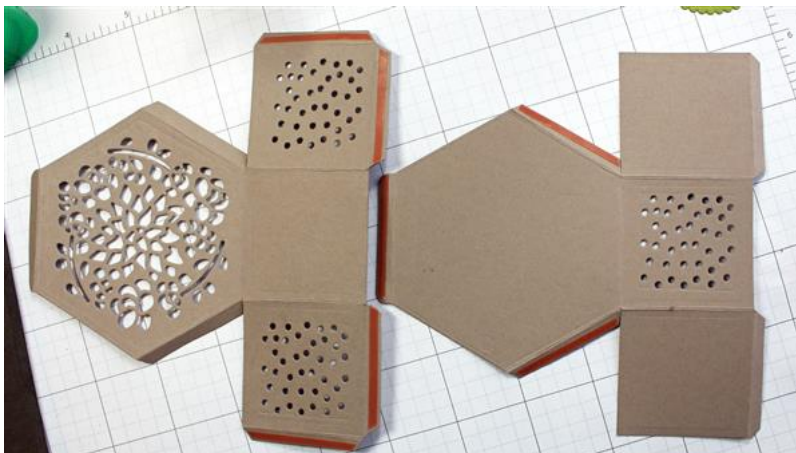
[marisaalvarez.stampinup.net](http://marisaalvarez.stampinup.net)



## Measurements:

- Tip Top Taupe - 8 1/2 x 11" cut in half at 5 1/2"
- Old Olive - 4 1/4 x 5 1/2" and 2 1/4" square
- Calypso Coral - 2 x 4"
- Very Vanilla - 1 1/4 x 1 3/4"
- Metallic Ribbon Combo Pack - 23"

## Adhesive Placement:



# Succulent Window Box

**Marisa Alvarez**

847 922-6795 call/text

[marisa@kitchentablestamper.com](mailto:marisa@kitchentablestamper.com)

[marisaalvarez.stampinup.net](http://marisaalvarez.stampinup.net)

- [Window Box Thinlits Dies - 142762](#)
- [Endless Thanks Photopolymer Stamp Set - 138796](#)
- [Layering Circle Framelits Dies - 141705](#)
- [Succulent Framelits Dies - 142757](#)
- [Big Shot - 143263](#)
- [Magnetic Platform - 130658](#)
- [Stampin' Dimensionals - 104430](#)
- [Multipurpose Liquid Glue - 110755](#)
- [Metallic Enamel Shapes - 141678](#)
- [Soft Suede Classic Stampin' Pad - 126978](#)
- [Very Vanilla 8-1/2" X 11" Cardstock - 101650](#)
- [Calypso Coral 8-1/2" X 11" Cardstock - 122925](#)
- [Old Olive 8-1/2" X 11" Cardstock - 100702](#)
- [Tip Top Taupe 8-1/2" X 11" Cardstock - 138336](#)
- [3/8" Metallic Ribbon Combo Pack - 143601](#)
- [Fuse Fast Adhesive - 129026](#)