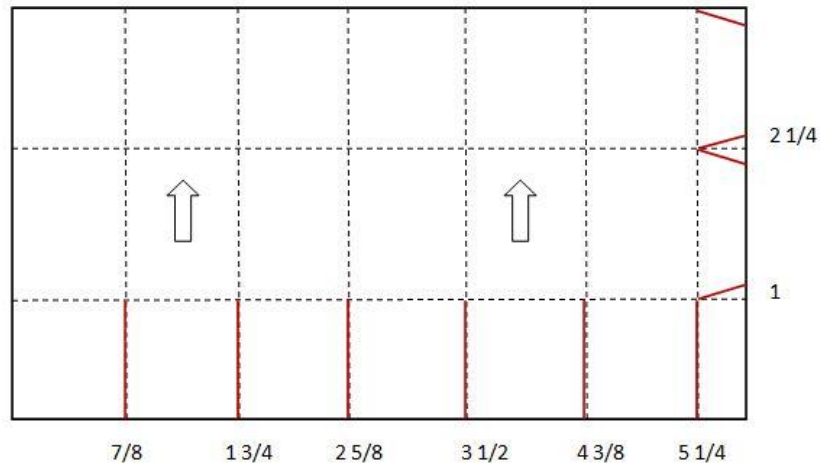


Love Notes Valentine Mini Mug

Marisa Alvarez
847 922-6795 call/text
marisa@kitchentablestamper.com
marisaalvarez.stampinup.net



Kitchen Table Stamper Mini Mug Cutting Diagram

----- Score
— Cut
Be sure that paper with a directional pattern is facing the direction of the arrows

Measurements:

Pinecones & Presents DSP - 3 x 1" scored portrait at 1/2

5 3/4 x 3 1/2", scored landscape at 7/8, 1 3/4, 2 5/8, 3 1/2, 4 3/8, 5 1/4" then score portrait at 1 and 2 1/4"

Whisper White - 1 x 3", 2 1/2" square,

Cherry Cobbler - 1 1/2" square

Bermuda Bay - 2 1/2" square, 2 1/2 x 1"

Bermuda Bay 1/8" Stitched Ribbon - about 10"

Love Notes Valentine Mini Mug

Marisa Alvarez

847 922-6795 call/text

marisa@kitchentablestamper.com

marisaalvarez.stampinup.net

- [Presents & Pinecones Designer Series Paper - 141986](#)
- [Cookie Cutter Builder Punch - 140396](#)
- [Hang Your Stocking Photopolymer Stamp Set - 142114](#)
- [Big Shot - 143263](#)
- [Fuse Fast Adhesive - 129026](#)
- [Snail Adhesive - 104332](#)
- [Stampin' Dimensionals - 104430](#)
- [Bermuda Bay 1/8" \(3.2 Mm\) Stitched Ribbon - 140569](#)
- [Bermuda Bay 8-1/2" X 11" Cardstock - 131197](#)
- [Whisper White 8-1/2" X 11" Cardstock - 100730](#)
- [Cherry Cobbler 8-1/2" X 11" Cardstock - 119685](#)
- [Layering Circle Framelits Dies - 141705](#)
- [Cheerful Tags Framelits Dies - 141838](#)
- [Love Notes Framelits Dies - 142752](#)
- [Simply Scored - 122334](#)
- [Stitched Shapes Framelits Dies - 145372](#)
- [Basic Black Archival Stampin' Pad - 140931](#)