

# Hang Your Stocking TriFold Card

Marisa Alvarez

847 922-6795 call/text

[marisa@kitchentablestamper.com](mailto:marisa@kitchentablestamper.com)

[marisaalvarez.stampinup.net](http://marisaalvarez.stampinup.net)



## Measurements:

Garden Green - 12 x 5 1/4", 2" square

Delightful Dijon - 2" square

Pinecones & Presents DSP - 12 x 5", 3 7/8 x 4"

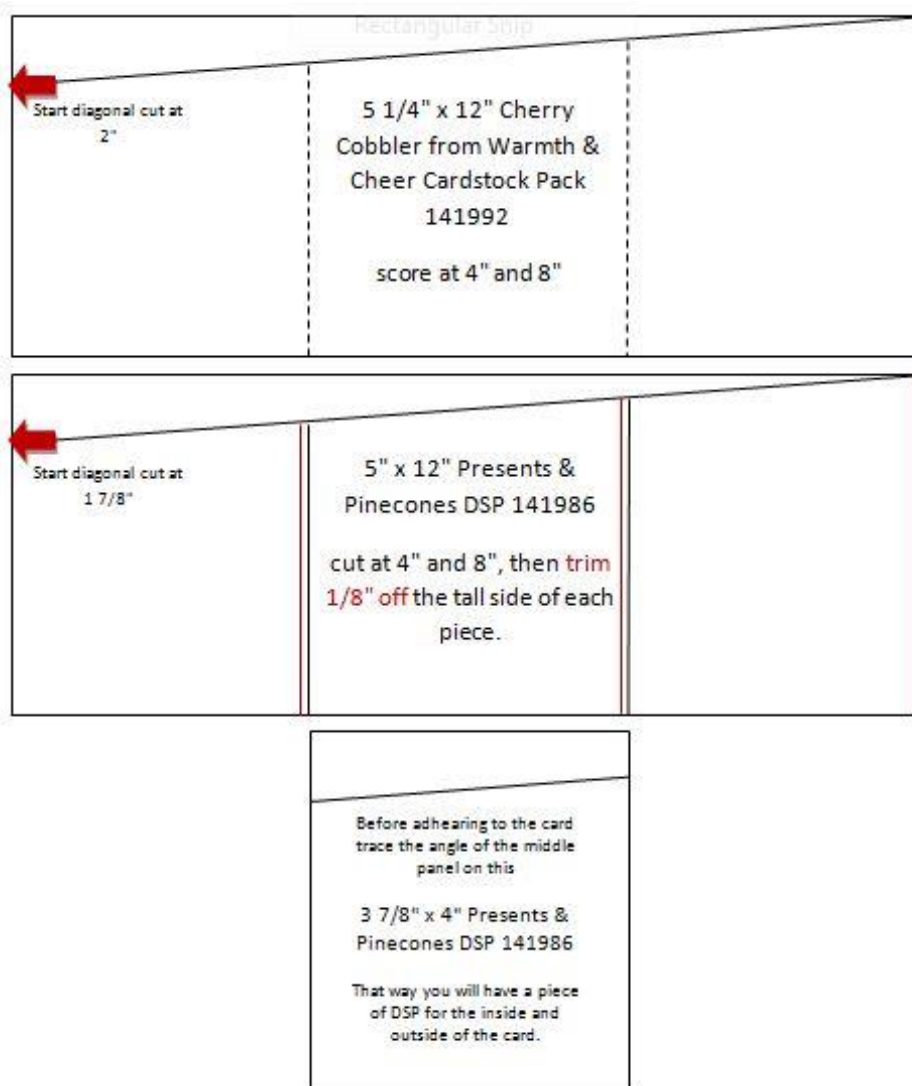
Whisper White 8 1/2 x 11, cut 7/8 x 8 1/2 off and reserve for sentiment

## Instructions:

1. Cut and score Garden Green cardstock and Pinecones and Presents DSP according to the cutting diagram below. Adhere the DSP panels to the Garden Green cardbase.
2. Stamp many stocking images Hang Your Stocking on the Whisper White cardstock using Garden Green, Cherry Cobbler and Delightful Dijon Stampin' Pads. Die cut the stockings with the Christmas Stockings Thinlits Dies. Save five images whole, I used 2 snowflake pattern and 3 knit pattern stockings. Cut the rest of the stockings up and rearrange them to make multicolor images. Adhere the stockings as shown with Stampin' Dimensionals.
3. Tie a five tiny Linen Thread bows, 3 of which are tied to Mini Jingle Bells. Using Mini Glue Dots, adhere the bell bows on the last stocking and the first two stockings. The third and fourth will not be seen when the card is closed so just adhere a tiny bow with no bell.
4. Stamp sentiment on reserved 7/8 x 8 1/2 strip of Whisper White using Cherry Cobbler Ink. Cut dove tail with Banner Triple punch. Embellish the end of the sentiment panel with scraps of the multicolor stockings. Trim the end and adhere with Stampin' Dimensionals as shown.
5. Cut 2" inch Garden Green with pinking edge circle from Bakers Box Thinlits Die Set. Stamp sentiment on Delightful Dijon 2" square with VersaMark. Heat emboss with White Embossing Powder. Cut out with smallest Stitched Shape Framelits Circle and adhere to Garden Green pinked circle with Stampin' Dimensionals. Glue to a mini clothes pin and attach to card on the right center panel as shown. If you don't have a mini clothes pin, attach as shown with Mini Glue Dot.

# Hang Your Stocking TriFold Card

Marisa Alvarez  
847 922-6795 call/text  
[marisa@kitchentablestamper.com](mailto:marisa@kitchentablestamper.com)  
[marisaalvarez.stampinup.net](http://marisaalvarez.stampinup.net)



# Hang Your Stocking TriFold Card

Marisa Alvarez

847 922-6795 call/text

[marisa@kitchentablestamper.com](mailto:marisa@kitchentablestamper.com)

[marisaalvarez.stampinup.net](http://marisaalvarez.stampinup.net)



[Warmth & Cheer 12" X 12" \(30.5 X 30.5 Cm\) Cardstock Pack](#)

141992



[Presents & Pinecones Designer Series Paper](#)

141986



[Hang Your Stocking Photopolymer Stamp Set](#)

142114



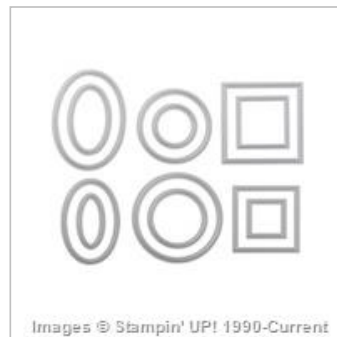
[Christmas Stockings Thinlits Dies](#)

141841



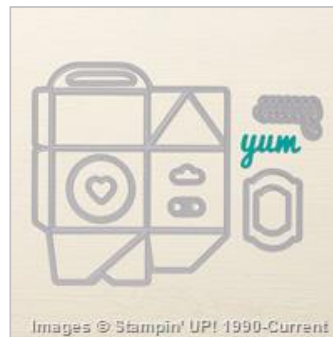
[Mini Jingle Bells](#)

142002



[Stitched Shapes Framelits Dies](#)

145372



[Baker's Box Thinlits Dies](#)

138279



[Big Shot](#)

143263

# Hang Your Stocking TriFold Card

Marisa Alvarez

847 922-6795 call/text

[marisa@kitchentablestamper.com](mailto:marisa@kitchentablestamper.com)

[marisaalvarez.stampinup.net](http://marisaalvarez.stampinup.net)



Images © Stampin' UP! 1990-Current

[Stampin' Trimmer](#)

126889



Images © Stampin' UP! 1990-Current

[Simply Scored](#)

122334



Images © Stampin' UP! 1990-Current

[Stampin'  
Dimensionals](#)

104430



Images © Stampin' UP! 1990-Current

[Mini Glue Dots](#)

103683



Images © Stampin' UP! 1990-Current

[Snail Adhesive](#)

104332



Images © Stampin' UP! 1990-Current

[Linen Thread](#)

104199



Images © Stampin' UP! 1990-Current

[VersaMark Pad](#)

102283



Images © Stampin' UP! 1990-Current

[Heat Tool \(Us And  
Canada\)](#)

129053

# Hang Your Stocking TriFold Card

Marisa Alvarez

847 922-6795 call/text

[marisa@kitchentablestamper.com](mailto:marisa@kitchentablestamper.com)

[marisaalvarez.stampinup.net](http://marisaalvarez.stampinup.net)



Images © Stampin' UP! 1990-Current

[Embossing Buddy](#)

103083



Images © Stampin' UP! 1990-Current

[White Stampin'  
Emboss Powder](#)

109132



Images © Stampin' UP! 1990-Current

[Whisper White 8-1/2"  
X 11" Cardstock](#)

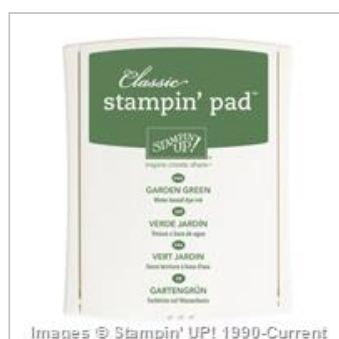
100730



Images © Stampin' UP! 1990-Current

[Cherry Cobbler  
Classic Stampin' Pad](#)

126966



Images © Stampin' UP! 1990-Current

[Garden Green Classic  
Stampin' Pad](#)

126973



Images © Stampin' UP! 1990-Current

[Delightful Dijon  
Classic Stampin' Pad](#)

138327



Images © Stampin' UP! 1990-Current

[Delightful Dijon 8-1/2"  
X 11" Cardstock](#)

138338